

**TYPICAL APPLICATIONS**

RV maceration. This pump is for intermittent duty only. This pump is not listed for potable water use. This pump may be used for general water transfer. For other applications, contact SHURflo.

**PUMP**

Type Flexible impeller  
 Ports Inlet: 1-1/2" Barb and NPT-M  
 Outlet: 1" Barb  
 Liquid 130 °F [54 °C] Max  
 Prime 4 feet [2.7 M]  
 Run Dry 2 minutes. Not Recommended.

**ELECTRICAL**

Motor 12VDC Permanent Magnet, Intermittent Duty  
 Protection Thermal Overload, Automatic Restart  
 Leads 14 AWG, 12" [31 cm]  
 Fuse 20 Amp Recommended  
 Control None.

**MATERIALS**

Housings Phenolic, Nylon  
 Impeller Polyurethane  
 Hardware Stainless Steel

**APPROVALS**

CSA, ISO 8846, meets 33CFR 183.410 ignition protection

**WARRANTY**

1 Year Limited Warranty  
 See 911-566 For Full Warranty Details

**SHIPPING**

Net Weight (Boxed) 6 Lb [2.7Kg] each  
 Carton Weight 6 each, 36 Lb [17 Kg]  
 Carton Size 24"L x 18"W x 6"H  
 [61cm x 46cm x 15cm]

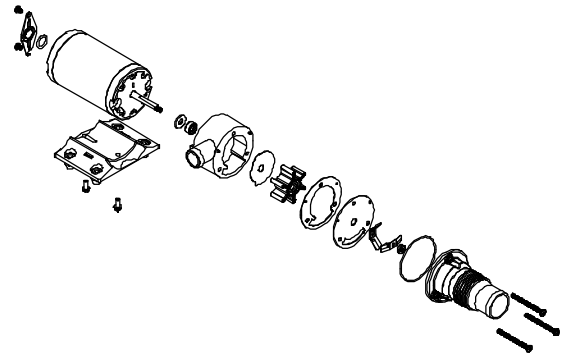
**RELATED DOCUMENTS**

Catalog MS-030-083  
 Installation Manual 911-566  
 Maintenance 911-566  
 Applications Spec Guide MS-020-005  
 Warranty SB-1041

**Macerator**



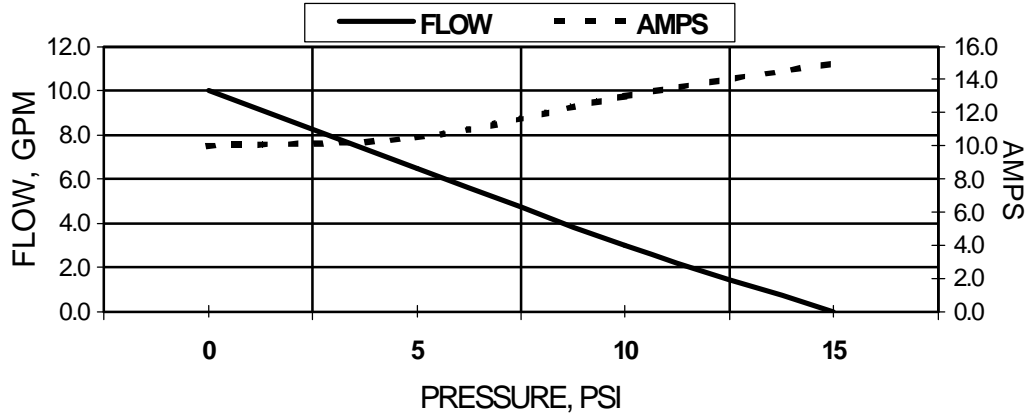
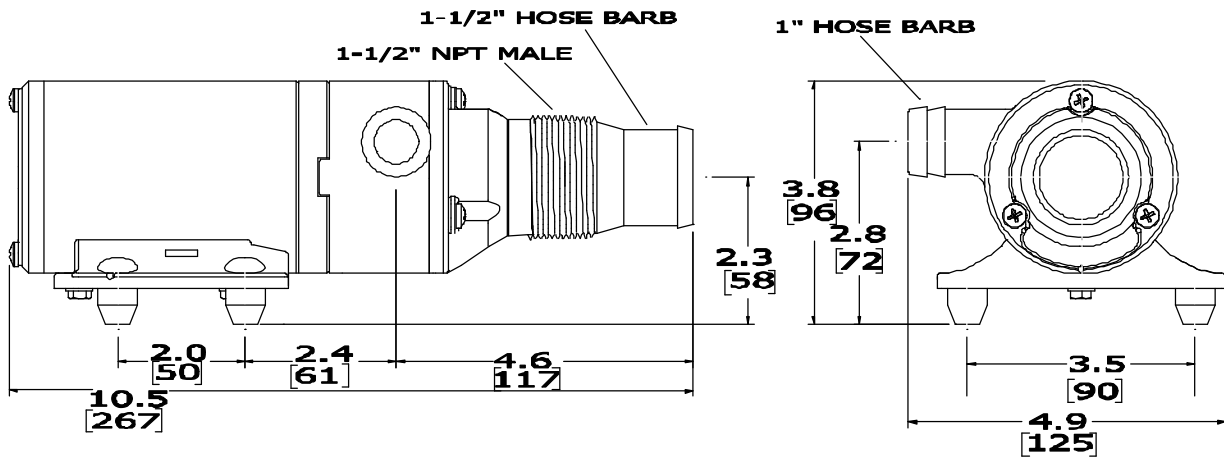
**Parts Kits**



Kit Number	Component
94-571-00	Impeller Kit (1 pc)
94-570-00	Pump Head Kit
94-570-01	Gasket Kit (10 pcs)
94-570-02	Cutter Blade Kit
94-570-03	Impeller Kit (10 pcs)
94-570-04	Lip Seal Kit

**Typical Performance**

PRESSURE		FLOW		CURRENT
BAR	PSI/Ft. Head	GPM	LPM	AMPS
0.0	0/0	10	37	10
0.34	5/11.5	6.5	24.6	10.5
0.68	10/23	3	11.3	13
0.71	10.5/24	2	7.5	13.7
Blocked	Blocked	0	0	15


**Typical Dimensions**


SHURflo reserves the right to update specifications, prices, or make substitutions.

**SHURflo, LLC Headquarters**  
 5900 Katella Avenue  
 Cypress, California 90630  
 Phone (562) 795-5200 Toll Free (800) 854-3218  
 Fax (562) 795-7554

**SHURflo, LLC East**  
 52748 Park Six Court  
 Elkhart, Indiana 46514-5427  
 Phone (562) 795-5200 Toll Free (800) 854-3218  
 Fax (574) 264-2169

**SHURflo Europe, Middle East, Africa**  
**Pentair Water Belgium bvba,**  
 Industriepark Wolfstee, Toekomstlaan 30  
 B-2200 Herentals, Belgium  
 Phone +32-14-283500 Fax +32-14-283505

© 2006 SHURflo, LLC All Rights Reserved